

# Children, families & Learning Overview & Scrutiny Committee 3<sup>rd</sup> November 2009

Safeguarding Children & Young People

Martin Pratt

Deputy Director Children, Families & Learning

# Safeguarding & accountability

- “The single most important change in the future must be the drawing of a clear line of accountability, from top to bottom, without doubt or ambiguity about who is responsible at every level for the wellbeing of vulnerable children.” – Laming Inquiry, January 2003.

# Introduction to Safeguarding Children

- Policy & Legislation
- Performance & Scrutiny
- Partnerships & Plans



# Policy & legislation

- Duty to safeguard & promote the Welfare of Children (Children Act 1989)
- Duty to establish and maintain a Local Safeguarding Children Board (LSCB) (Children Act (2004)
- Recent policy & regulatory changes following the death of baby Peter
- Inspection regime
  - Unannounced I&A
  - Announced Safeguarding & Corporate Parenting

# Performance and Scrutiny

- Role of DCS & Lead Member
- Clear performance information
- NIS Quarterly performance data
- Won't tell the whole story – Quality & Quantity
- Importance of appropriate Overview & Scrutiny

# PSA 13

- Percentage of children who have experienced **bullying**
- Percentage of children referred to children's social care who received an **initial assessment** within 7 working days
- Hospital admissions caused by **unintentional and deliberate injuries** to children
- **Preventable child deaths** (as recorded through child death review processes)

<b>Indicat or Ref.</b>	<b>Title</b>	<b>England Average 07/08</b>	<b>Group Average 07/08</b>	<b>CBC 31/03/2009</b>	<b>CBC 31/10/2009</b>
CD08	Children looked after per 10,000 population aged under 18	54.1	38.4	24	29
Local	Children looked after - actual number	307	218	136	165

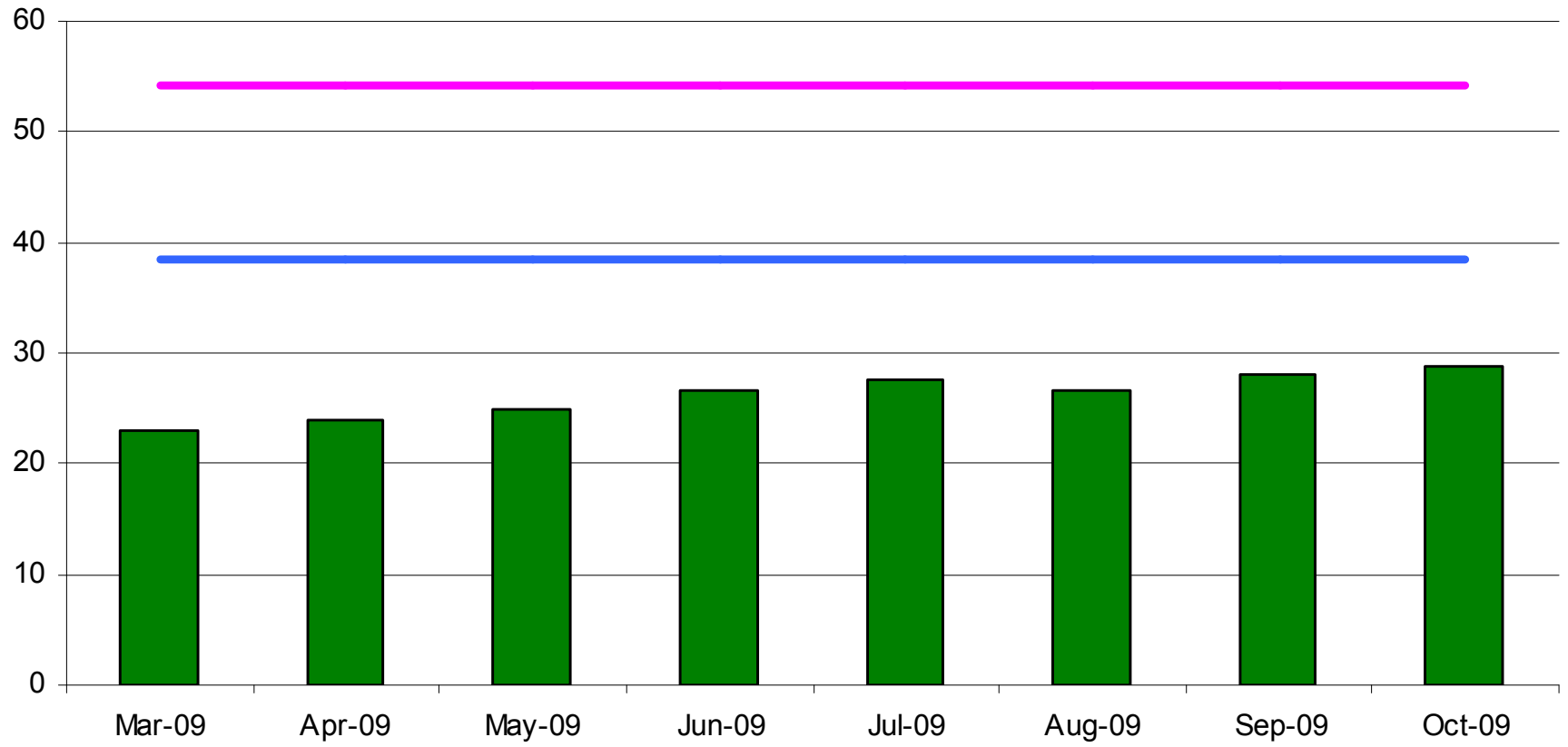
Comparative data for 08/09 for looked after children is not yet available.

The "actual number" for England and Statistical Neighbour averages is based on the respective Rate per 10,000 calculated to reflect Central Bedfordshire's under 18 population.

The indicator reference CD08 is the new Ofsted designation for the former APA reference 2042SC.

### Rate of Children Looked After per 10,000

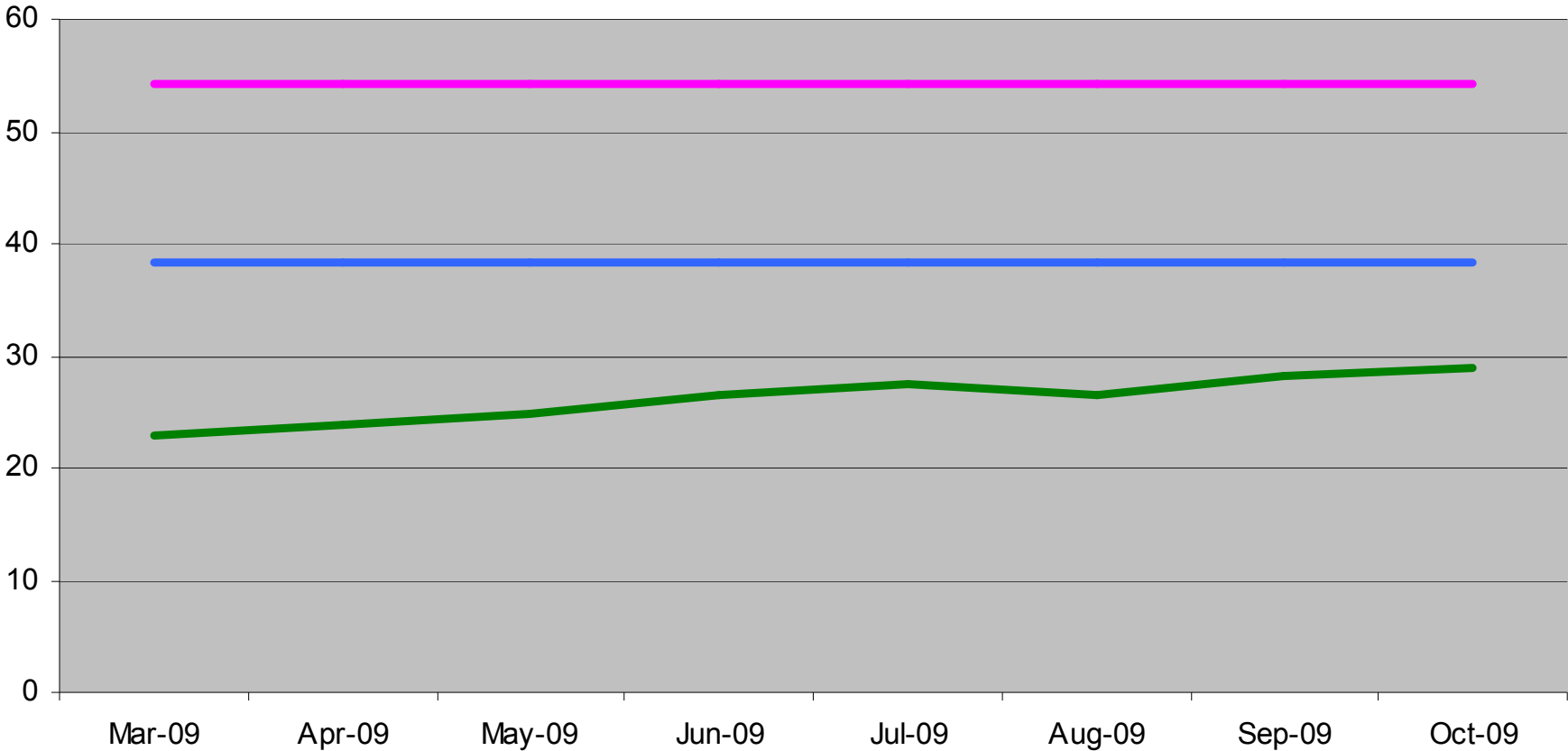
CBC Eng Ave 07/08 SN Ave 07/08



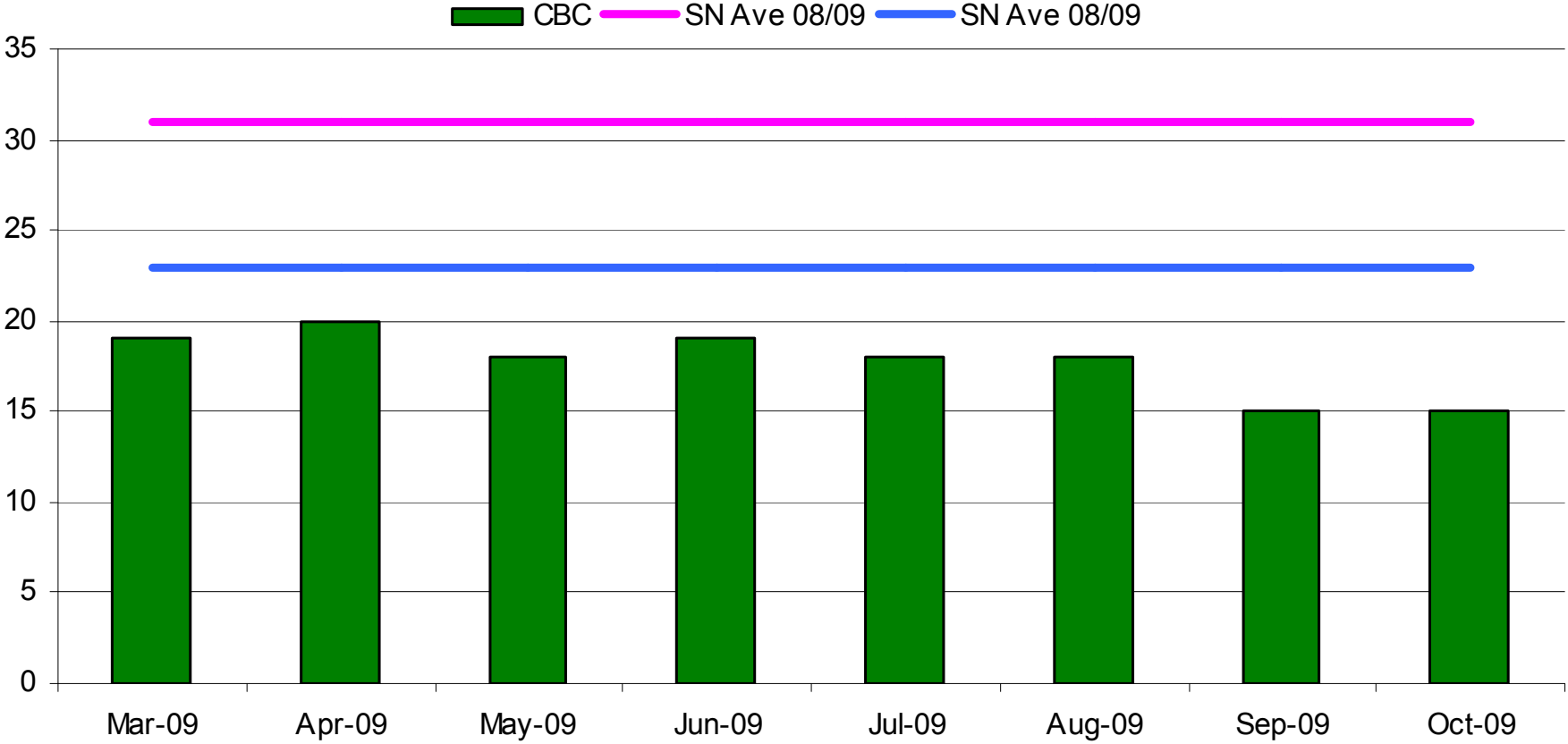


### Rate of Children Looked After per 10,000

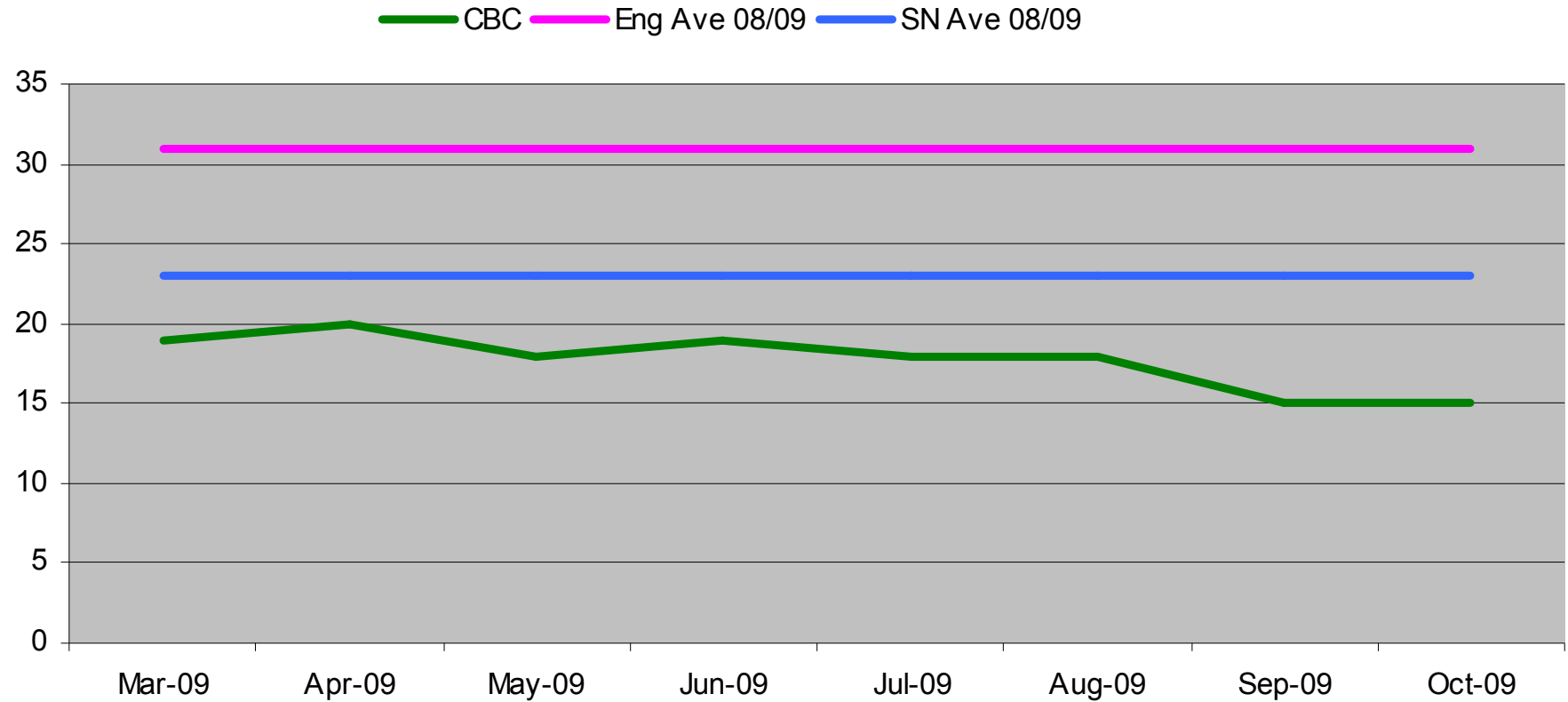
CBC Eng Ave 07/08 SN Ave 07/08



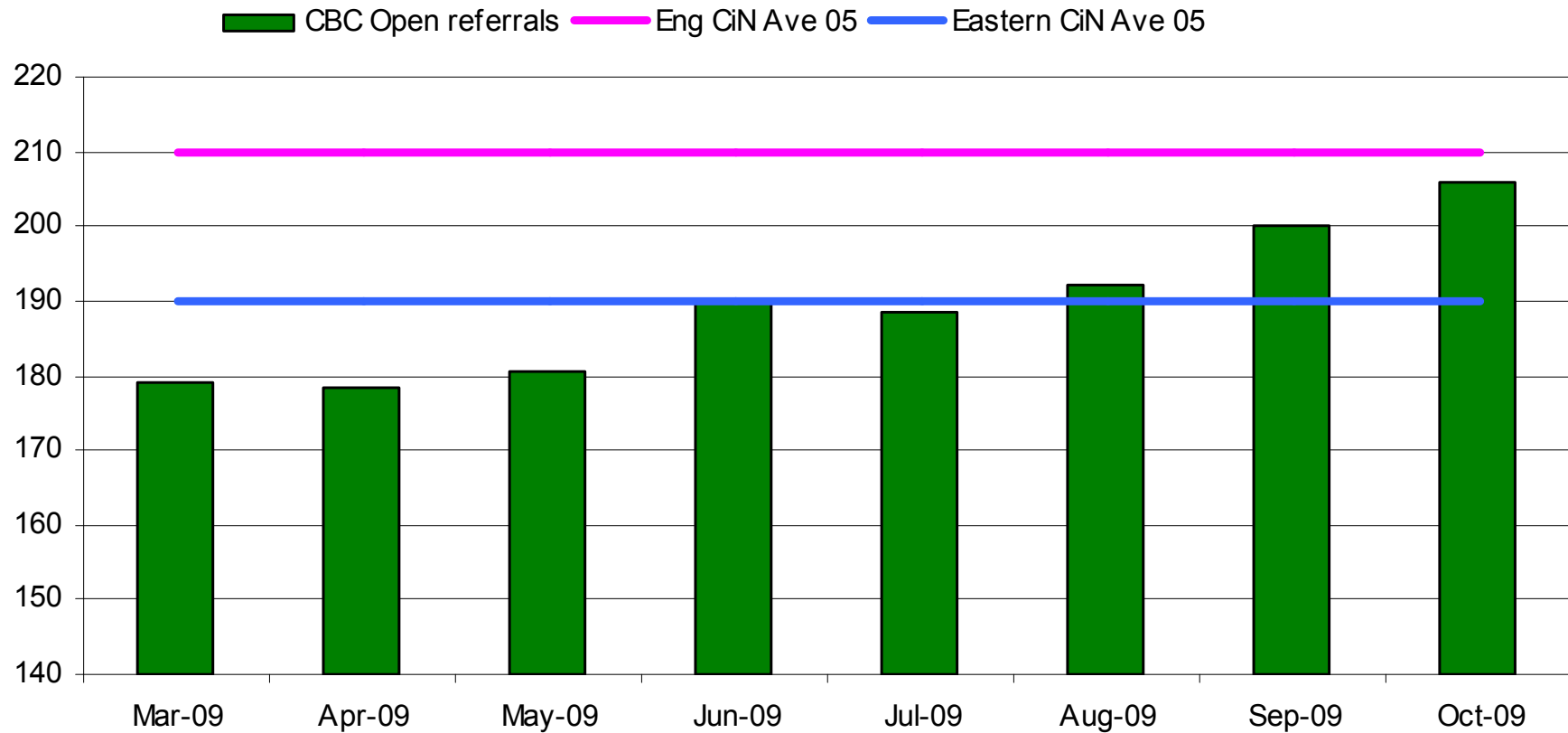
### Rate of children subject to a Child Protection Plan per 10,000



## Rate of children subject to a Child Protection Plan per 10,000



### Rate of Children in Need per 10,000

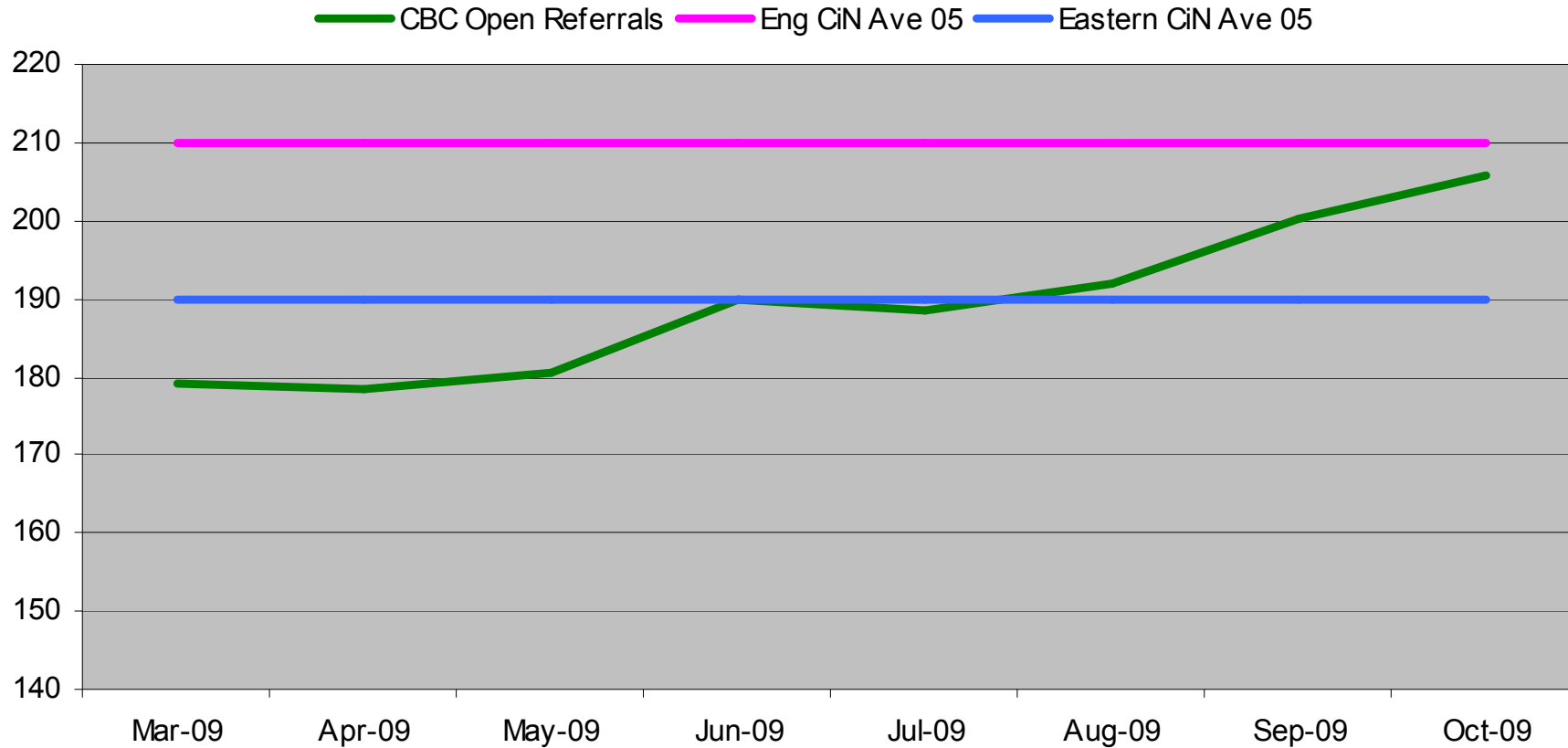


The England and Eastern Average figures are based on the 2005 CiN census which is the latest available information.

Criteria for inclusion in the 2005 Children in Need census is subtly different from current open referrals.

The definition of the 2009/10 census should be consistent with Open referrals.

### Rate of Children in Need per 10,000



The England and Eastern Average figures are based on the 2005 CiN census which is the latest available information.

Criteria for inclusion in the 2005 Children in Need census is subtly different from current open referrals.

The definition of the 2009/10 census should be consistent with Open referrals.

# Partnerships & Plans

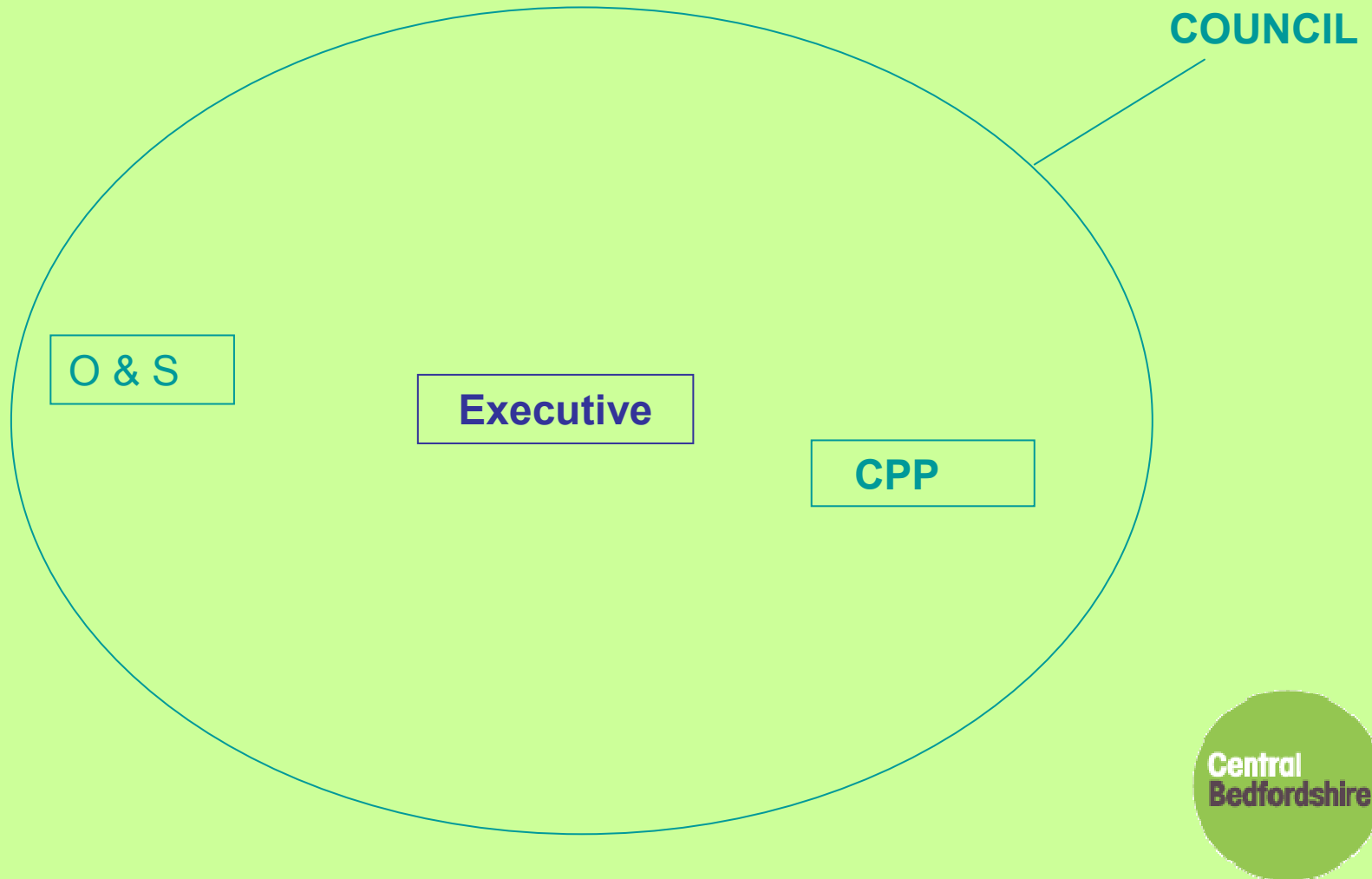
- **Children's Trust** – statutory partnership to develop local strategy, focus on priorities ensure effective joint working & commissioning
- **CYPP** – joint strategy setting out what Children's Trust partners will do to improve children's well-being in their area.
- **JSNA** – Assessment of demographic and other needs related information to inform local planning and commissioning

# Local Safeguarding Children Board

“The LSCB is the key statutory mechanism for agreeing how the relevant organisations in each local area will co-operate to safeguard and promote the welfare of children in that locality, and for ensuring the effectiveness of what they do.”

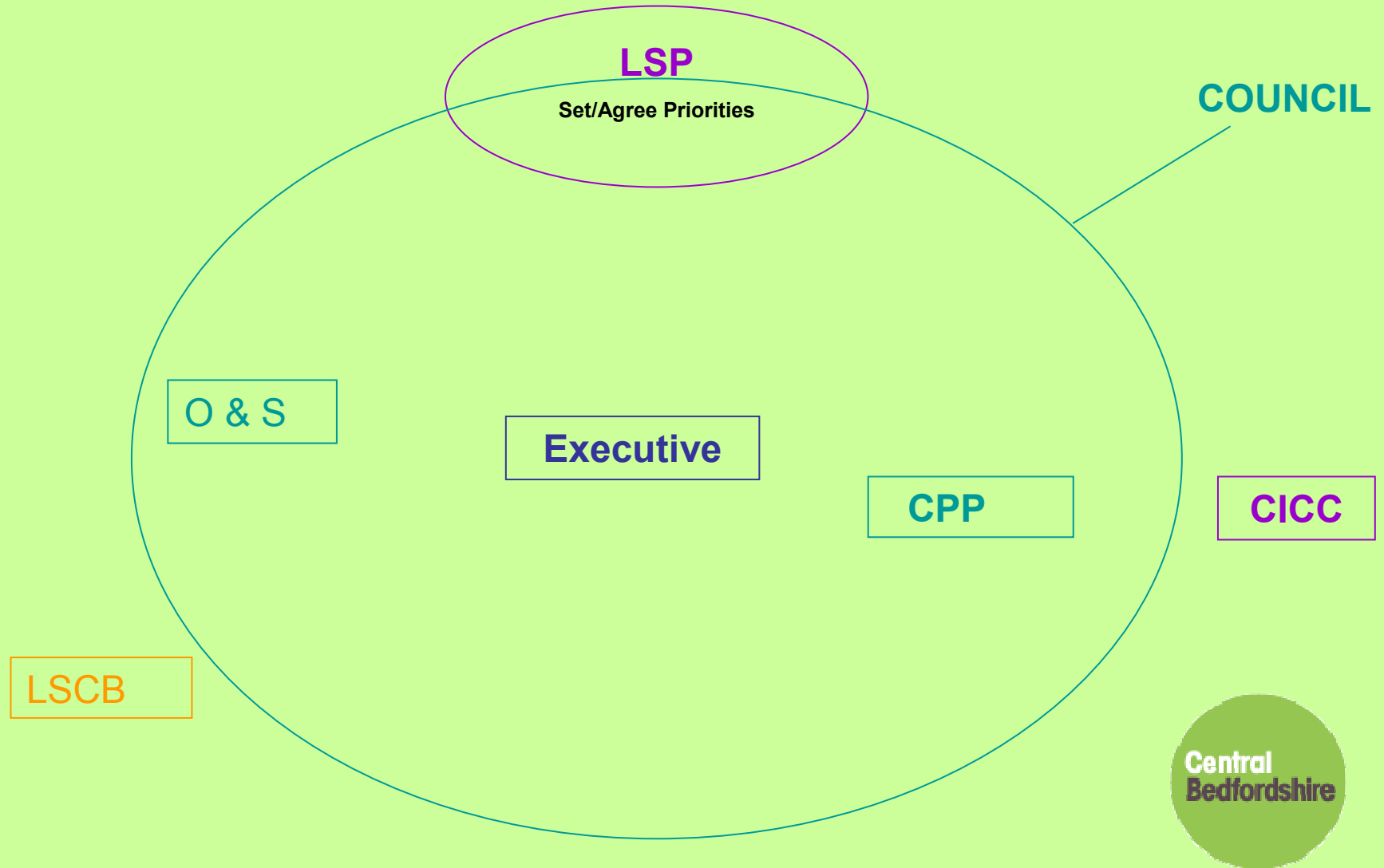
**Working Together to Safeguard Children (2006)**

# Children's Performance Matrix Relationships

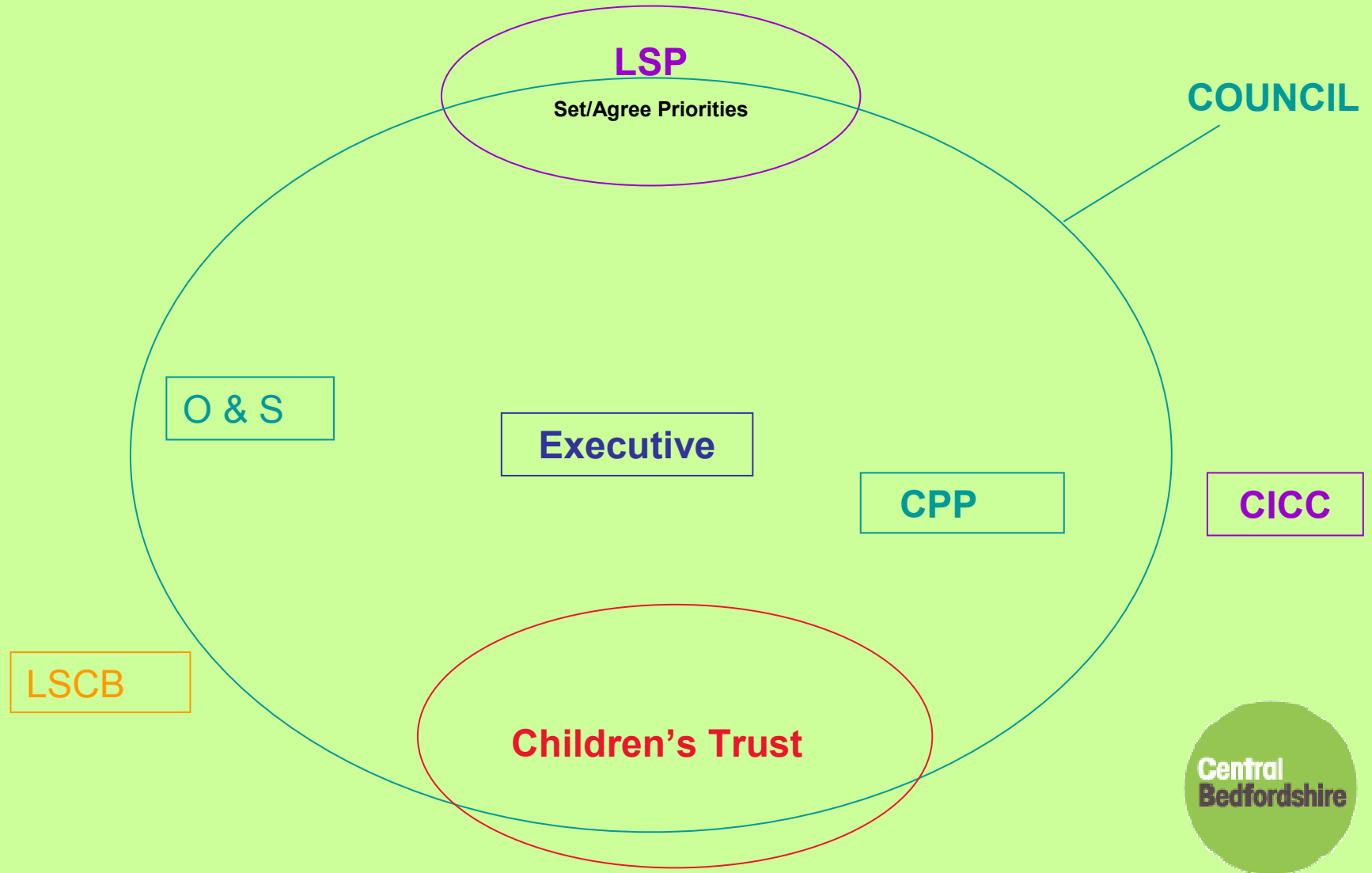




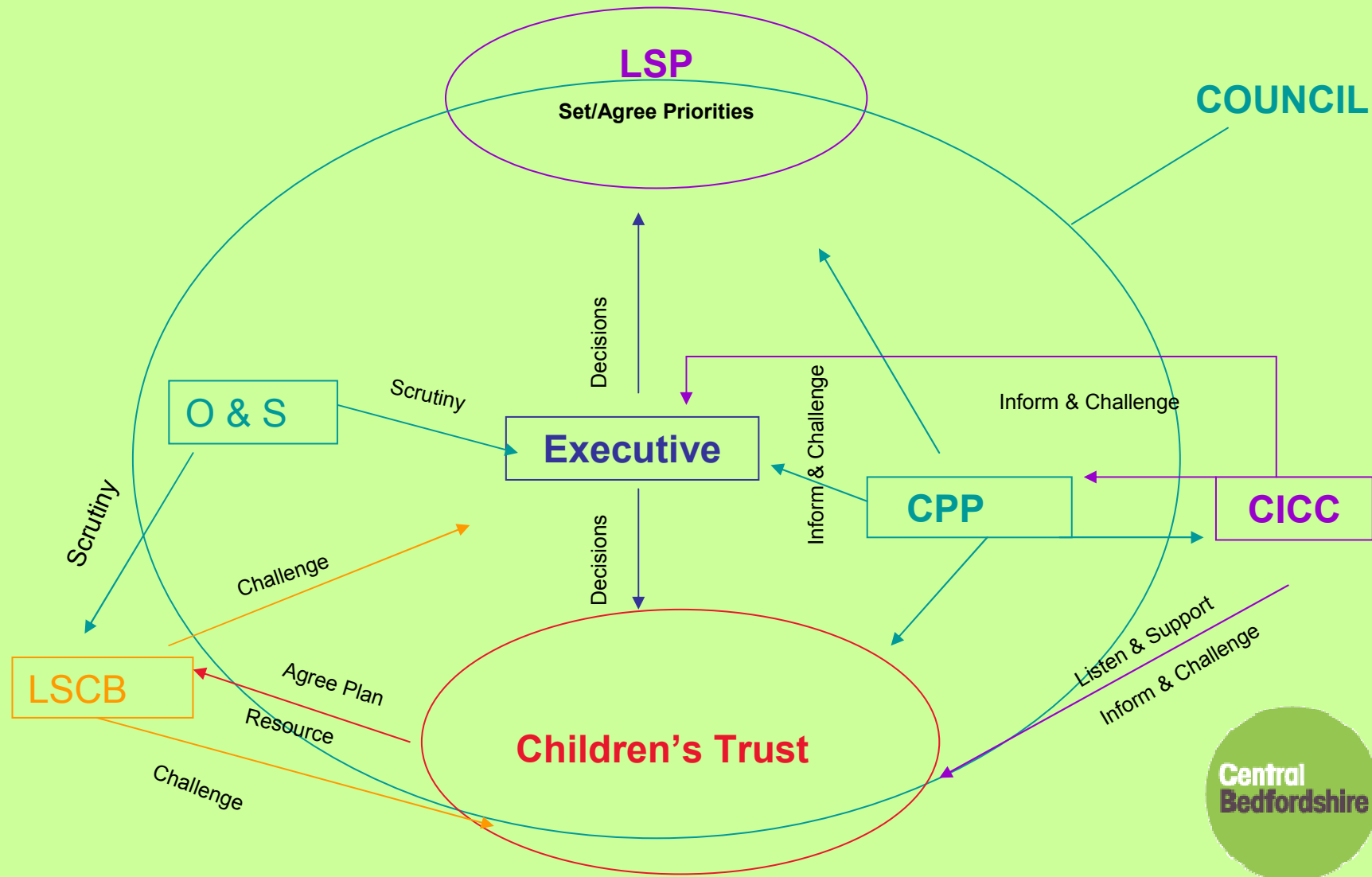
# Children's Performance Matrix Relationships



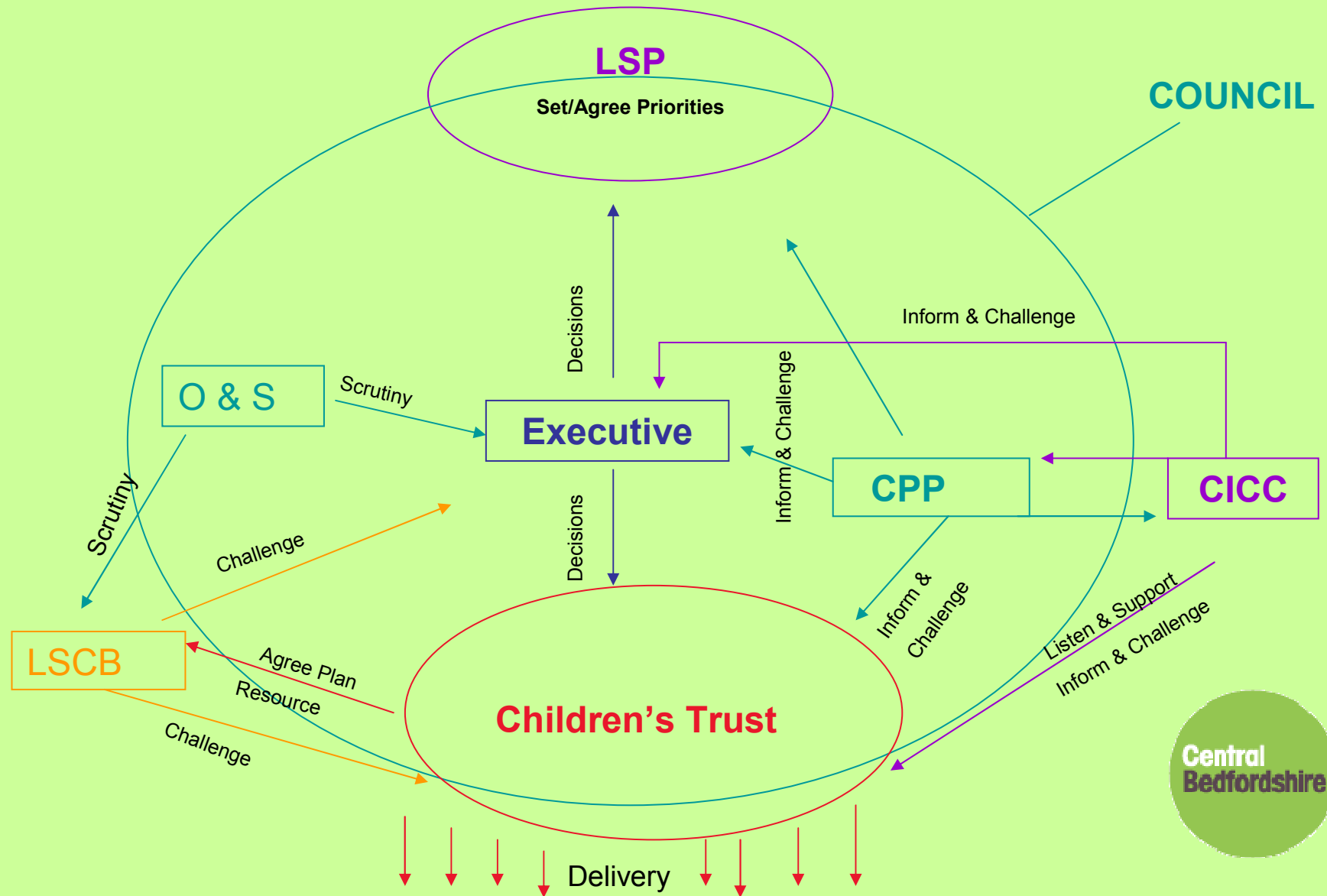
# Children's Performance Matrix Relationships



# Children's Performance Matrix Relationships



# Children's Performance Matrix Relationships



Having said all that.....

